

ADDENDUM NO. 1
TO
CITY OF AUBURN, MAINE
WIN 18651.00 LPA PROJECT – MILL, MAIN, BROAD STREET
IMPROVEMENTS
August 2, 2022

This addendum amends and /or supplements the bid documents as indicated below. Only these items alter the bid documents. Any verbal discussions or responses are hereby declared null and void. Please acknowledge this addendum on the attached Bid Form.

Clarifications to the Bid Documents:

The following changes and clarifications have been made to the Bid Documents:

1. Question: Please clarify limits of milling. Limits of milling are not clearly called out.
 - a. Answer – Variable depth milling will be required to achieve the proposed pavement cross slopes as shown on the cross sections. This project includes a pavement overlay with variable depth milling and shimming as needed to achieve the cross section cross slopes and grades. See attached graphic for limits of reconstruction areas.
2. Question: How was the 9.5mm shim quantity arrived at?
 - a. Answer – shim quantity was determined based on an average shim thickness over the roadway surface area.
3. Question: Please supply calculations and describe how butt joint quantity was arrived. Where are the butt joints to be used?
 - a. Answer – Calculations for butt joint quantity was determined using the DOT standard detail 202(01), for a 25mph speed. Butt joints are proposed at limits of work with existing streets. See limit of work notes on plan sheets 11 and 12.
4. Question: Is the Type B office trailer really required for this project?
 - a. Answer – yes.
5. Question: In Special Provision 104, it states that CMP can do all its work in 3 days. Please confirm that this is correct.
 - a. Answer – Contractor shall assume up to 15 working days will be required for CMP to complete their work.

6. Question: Will night work be allowed for operations other than milling and paving?
 - a. Answer – Yes, city will allow additional work to be completed during the night. Advanced coordination and approval by the city and inspector is required.
7. Question: Are all the new islands being capped with cobbles?
 - a. Answer – Yes, all proposed raised roadway medians will be capped with cobbles.
8. Question: Please clarify the color of the benches?
 - a. Answer – benches, bike racks and trash receptables shall be powder coated paint, color black.
9. Question: How many bikes does the city want the bike rack to hold? Also is the bike rack to be galvanized or powder coated a certain color?
 - a. Answer - Bike rack shall hold a minimum of 5 bikes matching Model SRE-5 as noted on plan sheet L-3. Bike rack shall be powdered coated paint and color black.
10. Question: Please clarify color of trash receptables.
 - a. Answer – Black.
11. Question: The manufacturer of the trash receptables has stated that they do not supply the mounting brackets. Please let us know the supplier/manufacturer of the bracket shown in the detail on sheet L-3.
 - a. Answer – the manufacturer of the mounting bracket for the trash receptable can be Pilot Rock, RJ Thomas Mfg. Co. for elevated pedestal mounts, or approved equal.
12. Question: Please verify the quantity for item 430.25 Cobblestone Pavement.
 - a. Answer – the revised quantity for item 430.25 Cobblestone Pavement shall be 180 SY. The bid form has been updated. Revised Bid Form is attached.
13. Question: Please supply details for the placement of the cobblestone pavement.
 - a. Answer – Cobblestone pavement shall be placed on a 12” thick compacted gravel layer with a 1” layer of leveling sand. Stones shall be placed in a manner that results in a uniform smooth surface with minimal spacing between the stones. Cutting of stones may be required. Abut stones to each other and fill any gaps between the stones with sand. Payment for all labor, equipment and materials necessary to complete the work including leveling

sand is considered part of Item 430.25. Base gravel will be paid for separately.

14. Question: At Sta. 305+50 RT, it calls for fencing to be removed. How will this work be paid for?

- a. Answer – payment for removing fence will be incidental to Item 203.20, Common Excavation.

15. Question: How is pavement that is being removed but not milled being paid for?

- a. Answer – Pavement being removed but not milled will be paid for under Item 203.20, Common Excavation.

16. Question: How is existing concrete that is removed being paid for?

- a. Answer – Existing concrete being removed will be paid for under Item 203.20, Common Excavation.

17. Question: How is existing storm drainage pipe that is being removed paid for?

- a. Answer – Existing storm drainage pipe being removed that is near the trench for proposed drainage pipe will be considered incidental to the new drainage pipe work, otherwise removal of existing pipe will be considered incidental to Item 203.20, Common Excavation.

18. Question: Does the City have a drainage sheet that calls out the locations and types of the new catch basins and runs.

- a. Answer – Drainage notes are provided on the cross sections and drainage quantities are provided on the Construction Notes, which is located on sheet 10 of the plan set.

19. Question: The gravel thickness in new curb locations calls for 24” gravel but the reconstruction areas in the roadway are only calling for 12” gravel. Is it your intention to only have 12” gravel in the travel ways?

- a. Answer – Yes, that is correct. The existing roadway should have adequate gravel depth under the travel lanes. The design calls for replacing the top 12” of gravel in the roadway in areas of where islands are being removed or installed. Work assumes existing gravel below the top 12” will remain. In areas where the existing roadway is being widened or vertical curbing is being replaced, a full 24” gravel section is proposed.

20. Question: Can you clarify the scope of work on Mill Street between stations 201+74.69 and 203+50?

- a. Answer – We agree the sawcut limits between the pavement overlay and reconstruction areas in this section are confusing on the plans. See attached graphic for limits of reconstruction areas.
21. Question: How is pavement required for electrical trenches that are in the streets being paid for?
- a. Answer – Similar to the traffic signal conduit work, all conduit crossing areas of existing pavement shall be installed using trenchless technology. Trenching across existing pavement will not be allowed.
22. Question: Please supply calculations for and describe how the base bid quantity of aggregate subbase gravel was arrived at?
- a. Answer – The subbase gravel quantity was calculated using the average end area method from the cross-section areas.
23. Question: Please clarify what is included in Item 403.209 for the base bid.
- a. Answer – Item 403.209 in the base bid includes driveways and parking lot areas.
24. Question: Are traps required for the new A1-C / A5-C / B5-C catch basins?
- a. Answer – No, traps are not required.
25. Question: How is temporary striping being paid for?
- a. Answer – Temporary striping will be paid for under Item 627.78 Temporary 4" Painted Pavement Marking Line, White or Yellow by the linear foot. The bid form has been updated. Revised Bid Form is attached.
26. Question: How are the signs shown on pages 18/19 of the plan being paid for?
- a. Answer – The signs shown on the signal sheets (pages 18/19) are paid for under the Items 643.80.
27. Question: Does the contractor need to submit pricing for both bid alt 1 and bid alt 2?
- a. Answer – Yes.
28. Question: Any flexibility in the maintenance of traffic restrictions, limits of operations, special provision 105?
- a. Answer – The special provision 105 shall remain unchanged.
29. Question: What is the intended pavement mix for the raised crosswalks?

- a. Answer – Item 403.2081 (12.5MM) mix was planned for the raised crosswalks. The City and DOT will coordinate with the contractor on this item during construction and as part of the pre-pave meeting. An alternative pavement mix may be used for the raised crosswalks.

SCHEDULE OF ITEMS (Revised 8/02/2022)							
Mill, Main and Broad Streets Intersection and Corridor Improvements - WIN 18651.00							
BASE BID - BID SECTION 0001							
Pay Item Number	Item Description	Approx. Quantity	Unit of Measure	Unit Price		Bid Amount	
				Dollars	Cents	Dollars	Cents
201.23	REMOVING SINGLE TREE TOP ONLY	6	Each				
201.24	REMOVING STUMP	7	Each				
202.15	REMOVING EXISTING MANHOLE OR CATCH BASIN	2	Each				
202.202	REMOVING PAVEMENT SURFACE	1500	Square Yard				
202.203	PAVEMENT BUTT JOINTS	1200	Square Yard				
203.20	COMMON EXCAVATION	2700	Cubic Yard				
304.10	AGGREGATE SUBBASE COURSE - GRAVEL	1750	Cubic Yard				
403.2081	HOT MIX ASPHALT, 12.5 MM NOMINAL MAXIMUM SIZE (POLYMER MODIFIED)	620	Ton				
403.209	HOT MIX ASPHALT, 9.5 MM NOMINAL MAXIMUM SIZE (SIDEWALKS, DRIVES, ISLANDS & INCIDENTALS)	150	Ton				
403.211	HOT MIX ASPHALT, 9.5 MM NOMINAL MAXIMUM SIZE (SHIMMING)	170	Ton				
403.213	HOT MIX ASPHALT, 12.5 MM NOMINAL MAXIMUM SIZE (BASE AND INTERMEDIATE COURSE)	420	Ton				
409.15	BITUMINOUS TACK COAT, APPLIED	480	Gallon				
430.25	COBBLESTONE PAVEMENT	180	Square Yard				
603.159	12-INCH CULVERT PIPE OPTION III	74	Linear Foot				
604.072	CATCH BASIN TYPE A1-C	6	Each				
604.16	ALTERING CATCH BASIN TO MANHOLE	5	Each				
604.164	REBUILDING CATCH BASIN	3	Each				
604.18	ADJUSTING MANHOLE OR CATCH BASIN TO GRADE	8	Each				
604.249	CATCH BASIN TYPE F6-C	1	Each				
604.252	CATCH BASIN TYPE A5-C	13	Each				

SCHEDULE OF ITEMS (Revised 8/02/2022)							
Mill, Main and Broad Streets Intersection and Corridor Improvements - WIN 18651.00							
604.262	CATCH BASIN TYPE B5-C	4	Each				
605.09	6-INCH UNDERDRAIN TYPE B	390	Linear Foot				
605.11	12-INCH UNDERDRAIN TYPE C	1040	Linear Foot				
607.24	REMOVE AND RESET FENCE	73	Linear Foot				
608.26	CURB RAMP DETECTABLE WARNING FIELD	462	Square Foot				
609.11	VERTICAL CURB TYPE 1	1700	Linear Foot				
609.12	VERTICAL CURB TYPE 1 - CIRCULAR	350	Linear Foot				
609.221	TERMINAL CURB TYPE 1	330	Linear Foot				
609.222	TERMINAL CURB TYPE 1 - CIRCULAR	170	Linear Foot				
609.34	CURB TYPE 5	140	Linear Foot				
609.35	CURB TYPE 5 - CIRCULAR	130	Linear Foot				
609.50	CONCRETE BASE FOR CURBING	2820	Linear Foot				
615.07	LOAM	100	Cubic Yard				
615.086	LOAM/COMPOST MIX	215	Cubic Yard				
618.13	SEEDING METHOD 1	8	Unit				
619.12	MULCH	8	Unit				
619.1301	BARK MULCH - PLAN QUANTITY	50	Cubic Yard				
621.138	SMALL DECIDUOUS TREE (1.5"-2" CAL) GRP A	5	Each				
621.273	LARGE DECIDUOUS TREE (2"-2.5" CAL) GRP A	19	Each				
621.71	GRASSES (PLUGS)	5400	Each				
626.11	PRECAST CONCRETE JUNCTION BOX	13	Each				
626.21	METALLIC CONDUIT	150	Linear Foot				
626.22	NON-METALLIC CONDUIT	710	Linear Foot				
626.22	1.5 INCH NON-METALLIC SCHEDULE 40 CONDUIT	1500	Linear Foot				

SCHEDULE OF ITEMS (Revised 8/02/2022)							
Mill, Main and Broad Streets Intersection and Corridor Improvements - WIN 18651.00							
626.23	1.5 INCH NON-METALLIC SCHEDULE 80 CONDUIT	700	Linear Foot				
626.34	2 INCH NON-METALLIC SCHEDULE 80 CONDUIT	150	Linear Foot				
626.371	FOUNDATION BASES	29	Each				
626.38	GROUND MOUNTED CABINET FOUNDATION	2	Each				
626.421	24 INCH DIAMETER FOUNDATION	91	Linear Foot				
626.44	36-INCH DIAMETER FOUNDATION	35.5	Linear Foot				
626.451	42-INCH DIAMETER FOUNDATION	31	Linear Foot				
626.47	54-INCH DIAMETER FOUNDATION	18	Linear Foot				
627.733	4-INCH WHITE OR YELLOW PAINTED PAVEMENT MARKING LINE	4300	Linear Foot				
627.75	WHITE OR YELLOW PAVEMENT AND CURB MARKING	4550	Square Foot				
627.78	TEMPORARY 4" PAINTED PAVEMENT MARKING LINE, WHITE OR YELLOW	5000	Linear Foot				
629.05	HAND LABOR, STRAIGHT TIME	8	Hour				
631.10	AIR COMPRESSOR (INCLUDING OPERATOR)	8	Hour				
631.11	AIR TOOL (INCLUDING OPERATOR)	8	Hour				
631.12	ALL PURPOSE EXCAVATOR (INCLUDING OPERATOR)	8	Hour				
631.172	TRUCK - LARGE (INCLUDING OPERATOR)	8	Hour				
631.18	CHAIN SAW RENTAL (INCLUDING OPERATOR)	8	Hour				
631.20	STUMP CHIPPER RENTAL (INCLUDING OPERATOR)	8	Hour				
634.042	#2 AWG CABLE INSTALLATION	450	Linear Foot				
634.043	#8 AWG CABLE INSTALLATION	15000	Linear Foot				
634.08	ELECTRICAL SERVICE BOXES	2	Each				
634.2101	CONVENTIONAL LIGHTING STANDARD	29	Each				
639.19	FIELD OFFICE, TYPE B	1	Each				
641.12	BENCH	5	Each				

SCHEDULE OF ITEMS (Revised 8/02/2022)							
Mill, Main and Broad Streets Intersection and Corridor Improvements - WIN 18651.00							
641.34	TRASH RECEPTABLE	2	Each				
643.63	RECTANGULAR RAPID FLASHING BEACON: MILL STREET	1	Lump Sum				
643.63	RECTANGULAR RAPID FLASHING BEACON: BROAD STREET	1	Lump Sum				
643.80	TRAFFIC SIGNALS AT MILL STREET/MAIN STREET	1	Lump Sum				
643.80	TRAFFIC SIGNALS AT MILL STREET/BROAD STREET	1	Lump Sum				
643.83	VIDEO DETECTION SYSTEM: MILL STREET/MAIN STREET	1	Lump Sum				
643.83	VIDEO DETECTION SYSTEM: MILL STREET/BROAD STREET.	1	Lump Sum				
643.92	PEDESTAL POLE	13	Each				
643.94	DUAL PURPOSE POLE - 30' MAST ARM	2	Each				
643.94	DUAL PURPOSE POLE - 35' MAST ARM	2	Each				
643.94	DUAL PURPOSE POLE - 40' MAST ARM	1	Each				
643.94	DUAL PURPOSE POLE - 55' MAST ARM	1	Each				
645.271	REGULATORY, WARNING, CONFIRMATION AND ROUTE ASSEMBLY SIGN, TYPE 1	180	Square Foot				
645.512	LED BLANK-OUT SIGN, OVERHEAD MOUNT	4	Each				
652.312	TYPE III BARRICADES	4	Each				
652.33	DRUM	75	Each				
652.34	CONE	75	Each				
652.35	CONSTRUCTION SIGNS	1050	Square Foot				
652.36	MAINTENANCE OF TRAFFIC CONTROL DEVICES	180	Calendar Day				
652.38	FLAGGERS	4300	Hour				
652.381	TRAFFIC OFFICERS	80	Hour				
652.41	PORTABLE CHANGEABLE MESSAGE SIGN	4	Each				
656.75	TEMPORARY SOIL EROSION AND WATER POLLUTION CONTROL	1	Lump Sum				
659.10	MOBILIZATION	1	Lump Sum				

SCHEDULE OF ITEMS (Revised 8/02/2022) Mill, Main and Broad Streets Intersection and Corridor Improvements - WIN 18651.00							
803.01	TEST PITS	2	Each				
841.48	BOLLARDS	5	Each				
890.07	BIKE RACK	1	Each				
TOTAL AMOUNT OF SECTION 0001, WRITTEN AND IN FIGURES BASED ON ESTIMATE OF QUANTITIES: <hr/> (written)							

SCHEDULE OF ITEMS (Revised 8/02/2022)
 Mill, Main and Broad Streets Intersection and Corridor Improvements - WIN 18651.00

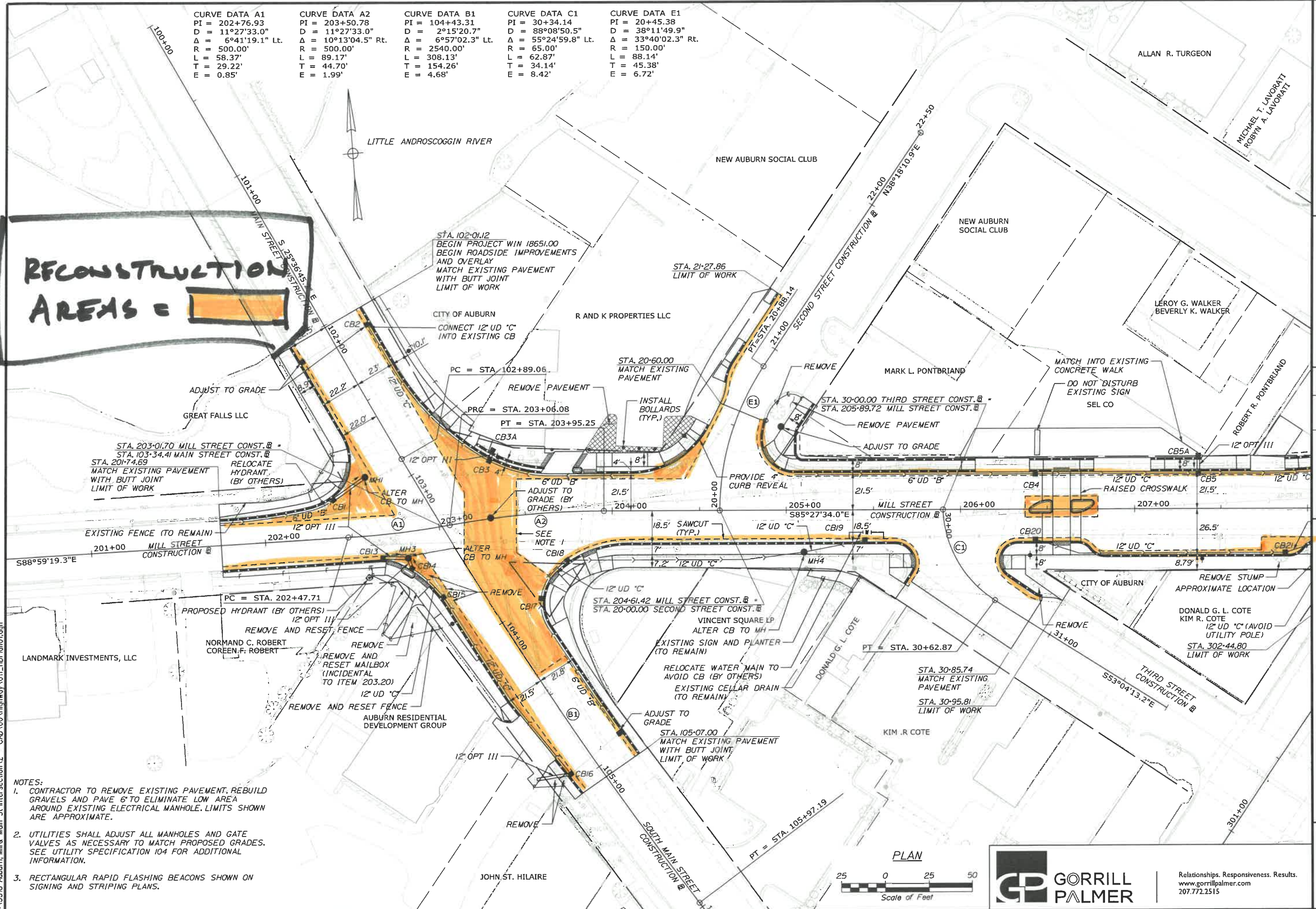
ALTERNATE 1 - BID SECTION 0002							
Pay Item Number	Item Description	Approx. Quantity	Unit of Measure	Unit Price		Bid Amount	
				Dollars	Cents	Dollars	Cents
304.10	AGGREGATE SUBBASE COURSE - GRAVEL	710	Cubic Yard				
403.209	HOT MIX ASPHALT, 9.5 MM NOMINAL MAXIMUM SIZE (SIDEWALKS, DRIVES, ISLANDS & INCIDENTALS)	240	Ton				
TOTAL AMOUNT OF SECTION 0002, WRITTEN AND IN FIGURES BASED ON ESTIMATE OF QUANTITIES: _____ (written)							

ALTERNATE 2 - BID SECTION 0003							
Pay Item Number	Item Description	Approx. Quantity	Unit of Measure	Unit Price		Bid Amount	
				Dollars	Cents	Dollars	Cents
304.10	AGGREGATE SUBBASE COURSE - GRAVEL	600	Cubic Yard				
608.08	REINFORCED CONCRETE SIDEWALK	2100	Square Yard				
TOTAL AMOUNT OF SECTION 0003, WRITTEN AND IN FIGURES BASED ON ESTIMATE OF QUANTITIES: _____ (written)							

THE BASIS OF AWARD WILL BE BASED UPON THE BASE BID AND EITHER BID ALTERNATE 1 OR 2 (SECTION 0002 OR SECTION 0003), WHICHEVER IS IN THE BEST INTEREST OF THE CITY.		
---	--	--

CURVE DATA A1	CURVE DATA A2	CURVE DATA B1	CURVE DATA C1	CURVE DATA E1
PI = 202+76.93	PI = 203+50.78	PI = 104+43.31	PI = 30+34.14	PI = 20+45.38
D = 11°27'33.0"	D = 11°27'33.0"	D = 2°15'20.7"	D = 88°08'50.5"	D = 38°11'49.9"
Δ = 6°41'19.1" Lt.	Δ = 10°13'04.5" Rt.	Δ = 6°57'02.3" Lt.	Δ = 55°24'59.8" Lt.	Δ = 33°40'02.3" Rt.
R = 500.00'	R = 500.00'	R = 2540.00'	R = 65.00'	R = 150.00'
L = 58.37'	L = 89.17'	L = 308.13'	L = 62.87'	L = 88.14'
T = 29.22'	T = 44.70'	T = 154.26'	T = 34.14'	T = 45.38'
E = 0.85'	E = 1.99'	E = 4.68'	E = 8.42'	E = 6.72'

RECONSTRUCTION AREAS = [Orange shaded area]



- NOTES:**
- CONTRACTOR TO REMOVE EXISTING PAVEMENT, REBUILD GRAVELS AND PAVE 6" TO ELIMINATE LOW AREA AROUND EXISTING ELECTRICAL MANHOLE. LIMITS SHOWN ARE APPROXIMATE.
 - UTILITIES SHALL ADJUST ALL MANHOLES AND GATE VALVES AS NECESSARY TO MATCH PROPOSED GRADES. SEE UTILITY SPECIFICATION 104 FOR ADDITIONAL INFORMATION.
 - RECTANGULAR RAPID FLASHING BEACONS SHOWN ON SIGNING AND STRIPING PLANS.



CITY OF AUBURN 60 COURT STREET AUBURN, MAINE 04210		WIN 18651.00	
DATE	BY	DATE	BY
DESIGN-DETAILED	TCL	DESIGN-DETAILED	TCL
CHECKED-REVIEWED	DOE	CHECKED-REVIEWED	DOE
DESIGN-DETAILED	DOE	DESIGN-DETAILED	DOE
REVISIONS 1		REVISIONS 1	
REVISIONS 2		REVISIONS 2	
REVISIONS 3		REVISIONS 3	
REVISIONS 4		REVISIONS 4	
FIELD CHANGES		FIELD CHANGES	
AUBURN MILL, MAIN AND BROAD STREETS		GENERAL PLANS	
SHEET NUMBER		11	
		OF 49	

Date: 5/27/2022

Username: Mike.Cundiff

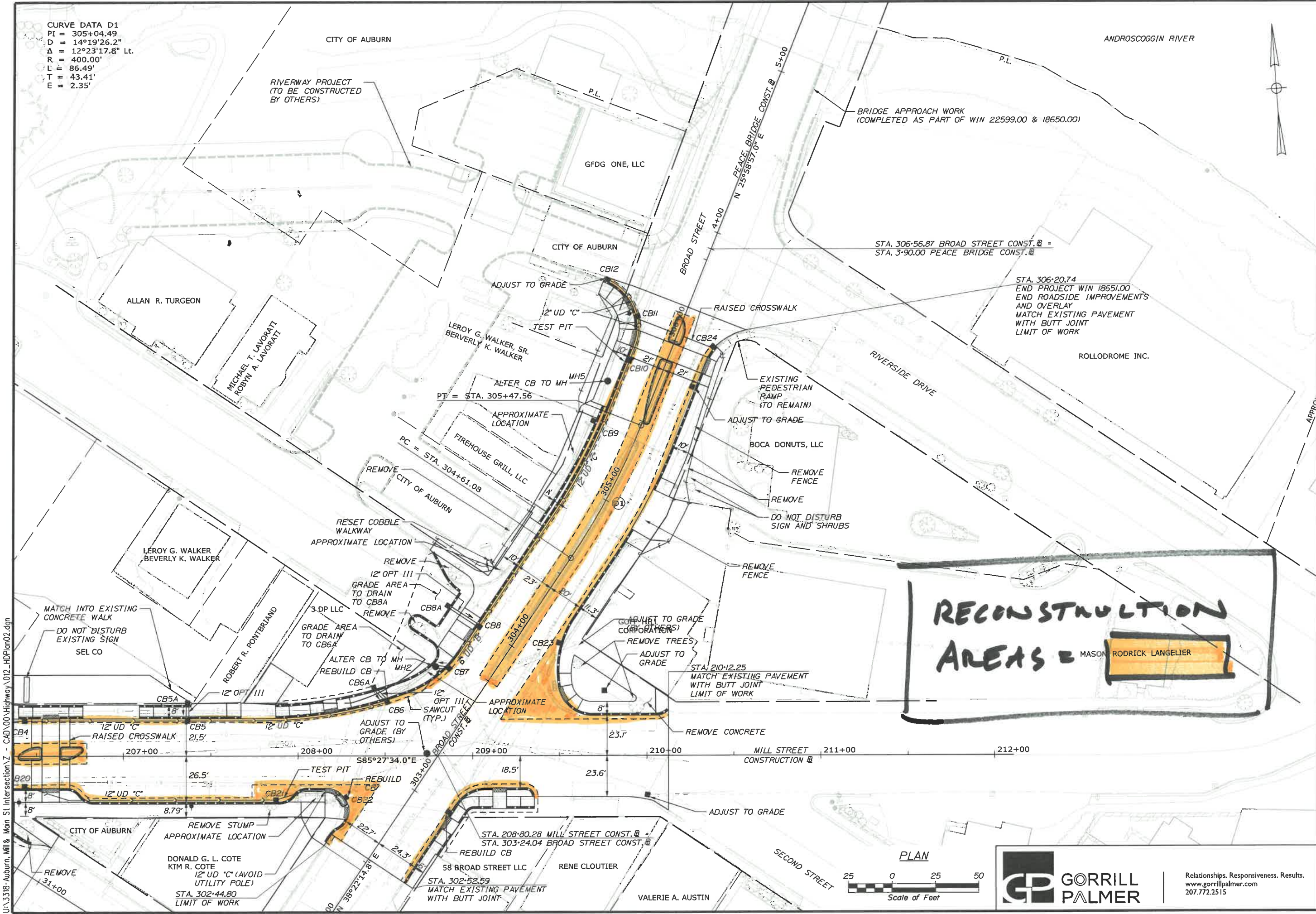
Division: HIGHWAY

Filename: ... \00\Highway\011_HDP\plan01.dgn

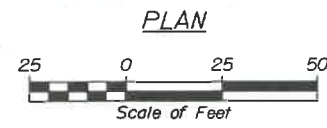
U:\3518-Auburn, Mill & Main St Intersection\Z - CAD\00\Highway\011_HDP\plan01.dgn

CURVE DATA D1
 PI = 305+04.49
 D = 14°19'26.2"
 Δ = 12°23'17.8" Lt.
 R = 400.00'
 L = 86.49'
 T = 43.41'
 E = 2.35'

Filename: ... \00\Highway\012_HDPlan02.dgn
 Division: HIGHWAY
 Username: Mike.Curdiff
 Date: 5/27/2022



RECONSTRUCTION AREAS = MASON RODRICK LANGELIER



Relationships. Responsiveness. Results.
 www.gorrillpalmer.com
 207.772.2515

CITY OF AUBURN 60 COURT STREET AUBURN, MAINE 04210		WIN 18651.00	
PROJ. MANAGER	B. KEEZER	DATE	05/22
DESIGN-DETAILED	TCL	DATE	05/22
CHECKED-REVIEWED	MFC	SIGNATURE	
DESIGN-DETAILED	DCE	P.E. NUMBER	
DESIGN-DETAILED	DCE	DATE	
REVISIONS 1			
REVISIONS 2			
REVISIONS 3			
REVISIONS 4			
FIELD CHANGES			
AUBURN MILL, MAIN AND BROAD STREETS		GENERAL PLANS	
SHEET NUMBER		12	
		OF 49	